

BASS 5900

Sewing system for single-tip and double-tip bust and back darts

BASS 5900

Sewing system for single-tip and double-tip bust and back darts

Technical Specifications

Dimensions

Length/with bundle clamp2100 mm
Width1.100 mm
Height1.400 mm

Table height

Manually adjustable from 890 mm to 1.150 mm

Weight

Basic equipment.....310 kg

Compressed air

Nominal pressure.....20 NI/6 bar

Power supply

Rated voltage220V/50/60 Hz
AC voltage220V/50/60 Hz
Power consumption.....0,7 kWh

Sewing System

Maximum sewing speed 4500 rpm
Maximum seam length.....570 mm
Maximum seam depth.....50 mm
Stitch length.....0,5-5 mm
Needle system.....134
Needle size70-100 Nm

Examples of output

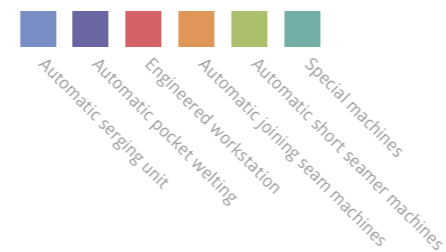
5-6 darts per min. with a seam length of 400 mm and a sewing speed of 4000 rpm.

Basic equipment

- Lockstitch sewing head Brother with direct drive and motor controller, AC voltage 190-240 Volt, 50/-60 Hz, with integrated thread cutter
- Micro-processor controller with LCD display and USB slot
- Pre laying station with integrated vacuum
- Transfer station, movable with controlled stepper motor
- X-axis drive (clamp transport) with controlled stepper motor
- Y-axis drive (movable sewing head) with controlled stepper motor
- Stacker
- Additional rotary device for de-stacking narrow sewing parts
- Needle thread monitor with bobbin thread counter
- Height-adjustable frame
- Machine-specific operator software for creating and administering sewing programs

Options:

- Vacuum pump



Darts and pleats appear to be simple seams at first sight, but they have a great impact on the fitting shape of shirts and blouses. One basic problem with these seams is that the sewing part is placed over a blade. In doing so, the sensitive materials (stretch, among others) are stretched and drawn. This has an unfavourable impact on the sewing result. In order to counter this problem, the company ASS has developed the automatic short seamer BASS 5900.

Advantages

- High productivity: 5-6 darts/min. with a seam length of 400 mm and a sewing speed of 4000 rpm.
- Simple operation – Quick learning process
- Easiest creation and administration of the stitching programs on the PC with machine-specific operator software
- There are almost no limits for the shape of the darts thanks to the X-Y controller
- All types of stitches can be processed without changing over the machine and merely by changing the program



Automated-Sewing-Systems AG

Am Beetacker 3 · 63856 Bessenbach
Fon: +49 6095 99233-0
Fax: +49 6095 99233-20
E-Mail: info@assag.de
Internet: www.assag.de

More than 6,000 sewing machines worldwide

Since the year 2000, we develop and produce automatic sewing systems for the HAKA and DOB production and market them all over the world. Among others, our range of products include automatic piping pocket, closing seam and serging units as well as engineered workstation

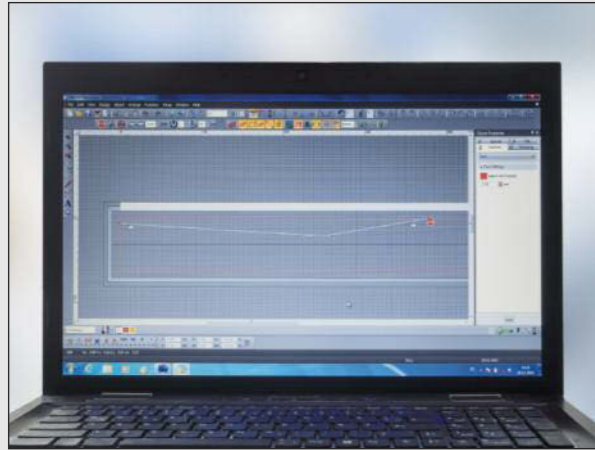
Ranging from the development and construction right up to installation and programming, we complete all work steps in our company in Germany. In this manner, we can ensure uniform and consistently high quality in all stages of production.

Our sewing systems provide functional and process-optimised solutions. We develop small quantities of special machines for specific customer requirements. We shall be pleased to prepare a unique offer even for you.



BASS 5900

Sewing system for single-tip and double-tip bust and back darts



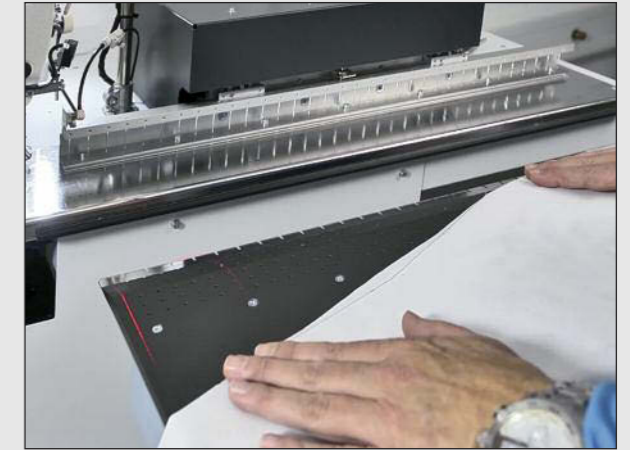
Simple creation and administration of the stitching programs on the PC with machine-specific operator software



Positioning of the sewing part on the marking lights of the pre-laying station



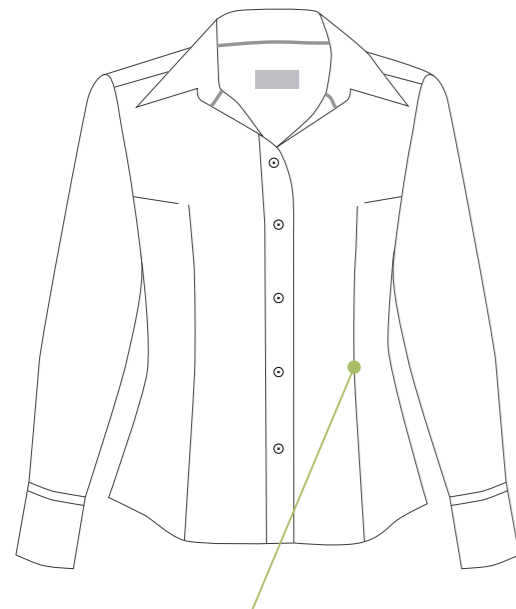
Automatic de-stacking of the sewed parts



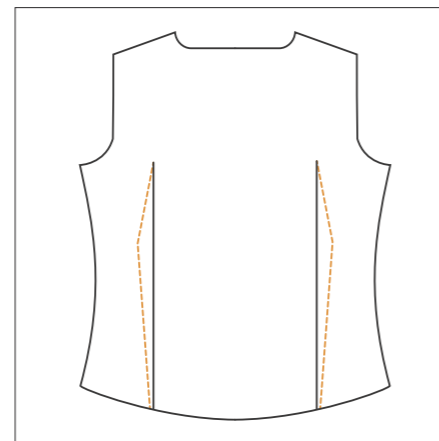
Accurate stitching on the tip of the dart (no cone formation)

Sample seams

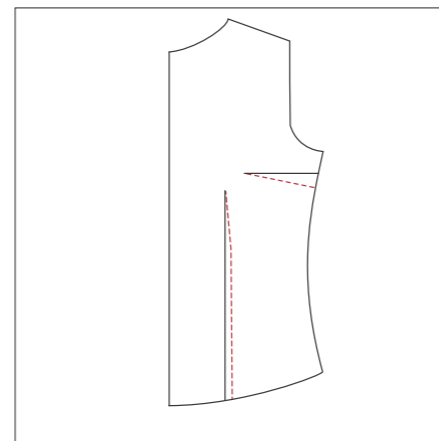
A few examples of the use of the BASS 5900 are illustrated here.



Waistline dart for ladies blouse



Single tip, waist dart for blouses, running out in the seam



Waist dart, single tip or double tip, as well as bust dart at the front of the blouse

Advantages

- ✓ Prompt positioning and fixing of the sewing material on the pre laying station with the help of a vacuum
- ✓ Three programmable marking lights for exact and clear positioning of the sewing part on the pre laying station
- ✓ Accurate stitching with stitch condensation over the dart tip (no cone formation)
- ✓ Overlapping working method / 4-5 seams per minute, without tack seam
- ✓ Simple operation, and as a result, quick learning process
- ✓ There are almost no limits for the shape of the darts thanks to the X-Y controller
- ✓ All types of stitches can be processed without changing over the machine and merely by changing the program
- ✓ Easiest creation and administration of the stitching programs on the PC with machine-specific operator software
- ✓ Micro-processor controller with integrated USB slot and a memory capacity of 60 stitches
- ✓ Consistently good quality even with difficult materials

Production Process

The use of the BASS 5900 ensures an enormous gain in productivity and seam quality. Overlapping method of working, as well as consistent sewing results with different materials.

Program pre-selection:

The pre-programmed seam is selected on the control panel.

Manual working steps:

Three marking lights ensure accurate positioning of the sewing part on the pre laying station.

Automatic sewing process:

The pre laying station with the sewing part positioned and fixed by vacuum moves to the transfer station. This accepts the sewing part and moves to the programmed dart depth (controlled stepper motor, programmable in 0.1 mm steps). Now the clamp accepts the sewing part (X-axis) and feeds it to the sewing head (Y-axis).

Automatic sewing of the programmed darting machine:

At the end of the seam, the clamp brings the sewing part to the stacking position where the de-stacking operation takes place. During the stitching, the next sewing part can be positioned on the pre laying table. This moves in after reaching a specific clamping position. This provides completely overlapped working method.

Performance Profile

The BASS 5900 is a sewing system on which darts can be darted rationally and with consistently good quality. There are almost no limits for the shape of the darts thanks to the X-Y controller. All shapes of seams can be processed without changing over the machine and merely by changing the program.

Work ergonomics:

The system must be operated as a workstation in standing position. The height of the table can be adjusted to the body height of the operator.